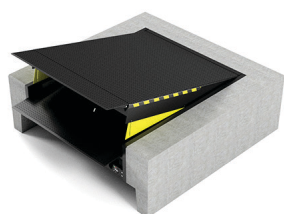




ELECTROHYDRAULIC DOCK LEVELER „AMTRK-PRO“

CAPACITY 6/10/12 T

Made in Poland



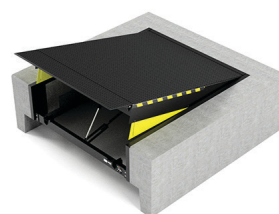
6/10/12 T

CAPACITY guarantees effective loading and unloading works. Integrated safety devices, in case of power failure or if the emergency stop switch is used (will stop in the current position),



6/8 MM

PLATFORM is made of 6/8 mm thick corrugated steel. Ramp lip is made of 12 mm high quality teardrop steel and has a reliable hinge system which works even in case of heavy soiling.



290/350mm

Operating ranges above / below grades. The maximum platform inclination in accordance with EN 1398 is 12.5%.

SPECIFICATION

Name	AMTRK-PRO
Dimensions	2500 x 2000 mm
Height	610 mm
Max. capacity	6/10/12 t
Operating ranges	290/350 mm
Supply voltage	230/400V AC, 1,1 kW
Control voltage	24 V DC
Motor power	IP 54
Tank capacity	7 dm ³
Mineral oil	Mobil DTE 10 Excel 15
Working pressure	160 bar
Standard colour	RAL9005 (additional option: galvanized steel)
The max. platform inclination	accordance with EN 1398 12.5%
Working temperature	-20°C iki +40°C

ELECTROHYDRAULIC DOCK LEVELER „AMTRK-PRO“ PRICES

Code	Description	Price, €/pcs (to buy separately)	Price, €/pcs (to buy set)*
AMTRK-PRO 25	length 2500 mm x width 2000 mm x height 610 mm; capacity – 6 000 kg	4858	4748
AMTRK-PRO 25 10	length 2500 mm x width 2000 mm x height 610 mm; capacity – 10 000 kg	5621	5511
AMTRK-PRO 25 12	length 2500 mm x width 2000 mm x height 610 mm; capacity – 12 000 kg	6382	6272

*The set consists of: loading house, electrohydraulic dock leveler, dock shelter, bumpers, wheel guides.

ADDITIONAL OPTIONS

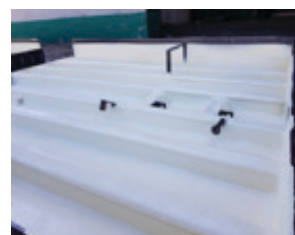
Description	Price, €/pcs
Diagonal lip (cut at an angle)	116
Divided lip (main part + 2 sides max. up to 250mm wide)	310
Dock leveler zinc coating	1106
Dock leveler made of 8/10 mm thick corrugated steel instead of standard 6/8mm.	298
Increased thermal and sound insulation of the ramp	83



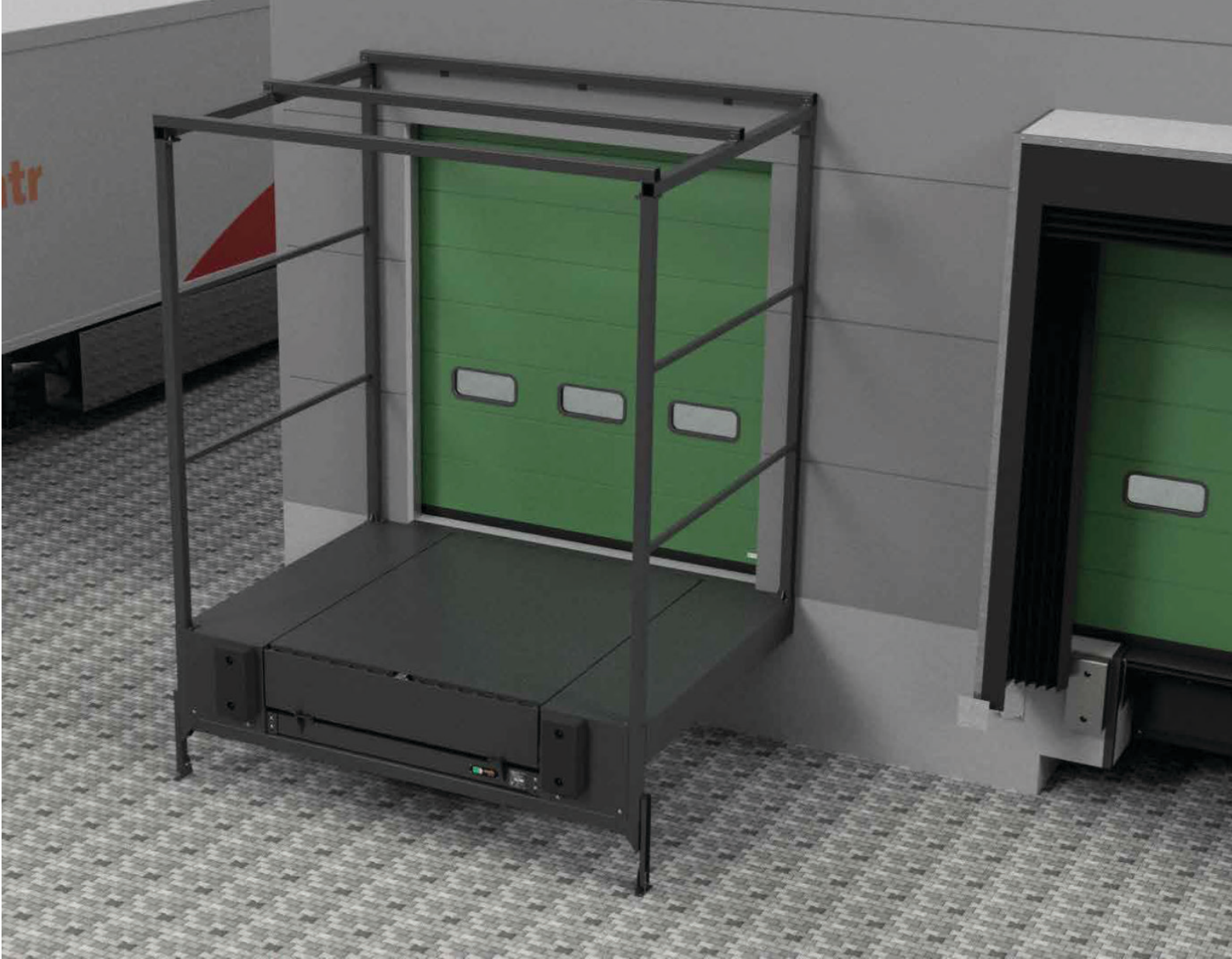
Diagonal lip (cut at an angle)



Divided lip (main part + 2 sides max. up to 250mm wide)



Increased thermal and sound insulation of the ramp



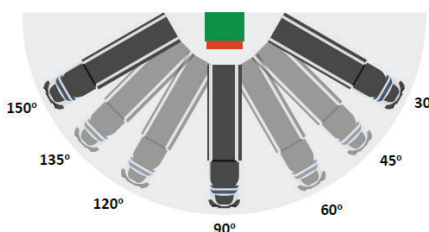
LOADING HOUSES „AMTRD-PRO”

Made in Poland

SETTING RANGES ARE: 30/45/60/90/120/135/150 DEGREES

Loading houses AMTRD-PRO are an economical and ergonomic alternative to conventional loading bays inside a warehouse. The structure is assembled by bolting together ready-made components without the need for welding. Loading houses are suitable for new building projects as well as for the modernisation of existing facilities. It has two fixed side platforms covered with corrugated 6/8 sheet metal. Integrated additional brackets allow easy assembly of any platform.

- Sturdy steel construction;
- Bolted construction;
- Fast and safe loading;
- Reduction of heat loss in the warehouse;
- Protects the loading area from the weather;
- Energy saving;
- Possible options 30/45/60/90/120/135/150 degrees



SPECIFICATION

Name	AMTR-D 90	AMTR-D 45
Platform	90 degrees	45 degrees
Dimensions	2500 x 3400 x 1065 - 1360 mm	
Weight	6 t	
Color	RAL9005	
Additional choice	galvanized steel	
Maximum wind resistance	(Eurocode 3) 0,84 kN/m ²	
Maximum resistance to snow pressure	(Eurocode 3) 2,00 kN/m ²	
Additional options are not included in the price	Tinning, dock leveller, bumpers, dock shelters	

LOADING HOUSE „AMTRD-PRO“ PRICES

Code	Description	Price, €/pcs (to buy separately)	Price, €/pcs (to buy set)*
AMTR-D 90	Modular loading house 90 degrees, 6 t	5174	5064
AMTR-D 45	Modular loading house 45 degrees, 6 t	8576	8466

*The set consists of: loading house, electrohydraulic dock leveler, dock shelter, bumpers, wheel guides.

ADDITIONAL OPTIONS

Description	Price, €/pcs
90 degrees loading house construction zinc coating	1514
Extra legs for loading house construction (self-supporting loading base)	685
90 degrees loading house construction application for pneumatic (inflatable) dock shelter 3500 x 3700 mm	593



90 degrees loading house



45 degrees loading house



DOCK SHELTERS

„AMTR - U / AMTR - P”

Made in Poland

The AMTR-U mechanical seal is designed for sealing a truck trailer at a loading bay. Due to the integration of the dock leveller with the loading bay, no additional element is required to protect the loaded goods. The AMTR-P inflatable dock seal is the most effective and durable of all dock seals. The construction of the air pockets harmonica shaped to create an optimal seal.

SPECIFICATION

Name	AMTR-U	AMTR-P
Type	Mechanical	Pneumatic (Inflatable)
Dimensions	3400 x 3400 x 600 mm	3500 x 3700 x 800 mm
Fabric	3 mm three-layer PVC coating, black, resistant to weather conditions and mechanical damage	Airbags are made of woven polyester, with double-sided PVC coating, flexible and extremely stable protective strips made of 3500 g/m ² double layer woven polyester
Color	RAL9005	PVC RAL 9005, sides galvanized steel covered with gray (similar to RAL7042) synthetic coating)
Inflation time	-	30 sec.
Deflation time	-	40 sec.
Power	-	450 W 50 Hz
Supply voltage	-	230 V

DOCK SHELTERS PRICES

Code	Description	Price, €/pcs (to buy separately)	Price, €/pcs (to buy set)*
AMTR-U	Mechanical dock shelter	1514	1294
AMTR-P	Pneumatic (inflatable) dock shelter	5544	5214

*The set consists of: loading house, electrohydraulic dock leveler, dock shelter, bumpers, wheel guides.



AMTR - U" Mechanical dock shelter



„AMTR - P Pneumatic (inflatable) dock shelter

PRICES OF ACCESSORIES

Code	Description	Price, €/couple (to buy separately)	Price, €/couple (to buy set)*
AMTR-N angled	Galvanized wheel guides lenght - 2000 mm, height - 250mm, tube diameter 159 mm, BENDED at an angle of 15 degrees.	1049	821
AMTR-N straight	Galvanized wheel guides lenght - 1840 mm, height - 250mm, tube diameter 159 mm, STRAIGHT.	1001	773
JUMBO	Rubber bumper 500 x 250 x 100 mm	473	334
JUMBO - PRO	Rubber bumper with additional steel protection 500 x 250 x 100 mm	644	504

*The set consists of: loading house, electrohydraulic dock leveler, dock shelter, bumpers, wheel guides.



The wheel guides are bent at an angle of 15 degrees.



Straight wheel guides.



Rubber bumper.



Rubber bumper with additional steel protection



MECHANICAL BRIDGE

„AMTR - I / AMTR - J”



The AMTR-I and AMTR-J mechanical bridges is designed for use in all types of industrial facilities where an additional docking system is required.

SPECIFICATION

Name	AMTR-I	AMTR-J
Control	Manual	
Made of	Hot-dip galvanized steel	Painted steel
Capacity	6 t	
Color	Zinc color	Standard colors RAL9005, RAL7042, RAL5010 (other RAL colors or galvanizing are available for an additional fee)
Dimensions	Width: from 1200 to 2600 mm Height: from 550 to 650 mm	1000 x 1500 mm; 1500 x 1000 mm; 1500 x 1200 mm; 1500 x 1500 mm; 2000 x 1200 mm; 2000 x 1500 mm
Additional information	-	The weight of the bridge is balanced by a spring mechanism, which ensures that the bridge is launched with minimum energy consumption and prevents rapid descent.

Contact your manager for prices

